



Customer : ENV
Type : A318/A319/A320/A321
Rev. Date : July 1, 2009

Manual: CMMM
Filtered on P/N: ALL

DESCRIPTION AND OPERATION

56-21-13 PB 1 CONF 1 - DESCRIPTION AND OPERATION

**** ON P/N ALL**

TASK 56-21-13-870-803-A01

General

**** ON P/N ALL**

1. This section tells you what the component is and what it does.

**** ON P/N ALL**

2. Technical Data (approx.)

Height : 360.0 mm (14.2 in.)

Width : 260.0 mm (10.2 in.)

Depth : 25.0 mm (1.0 in.)

Weight: 1.5 kg (3.3 lb.)

Table 1 - Technical Data

**** ON P/N ALL**

TASK 56-21-13-870-804-A01

Description

**** ON P/N ALL**

1. See ([Ref. Fig. FIGURE 56-21-13-991-001-A](#))

**** ON P/N ALL**

2. The cabin window has:

- an outer pane,
- an inner pane,
- a rubber seal.

A. The outer pane and the inner pane are made of transparent stretched acrylic. The inner pane has a vent hole.

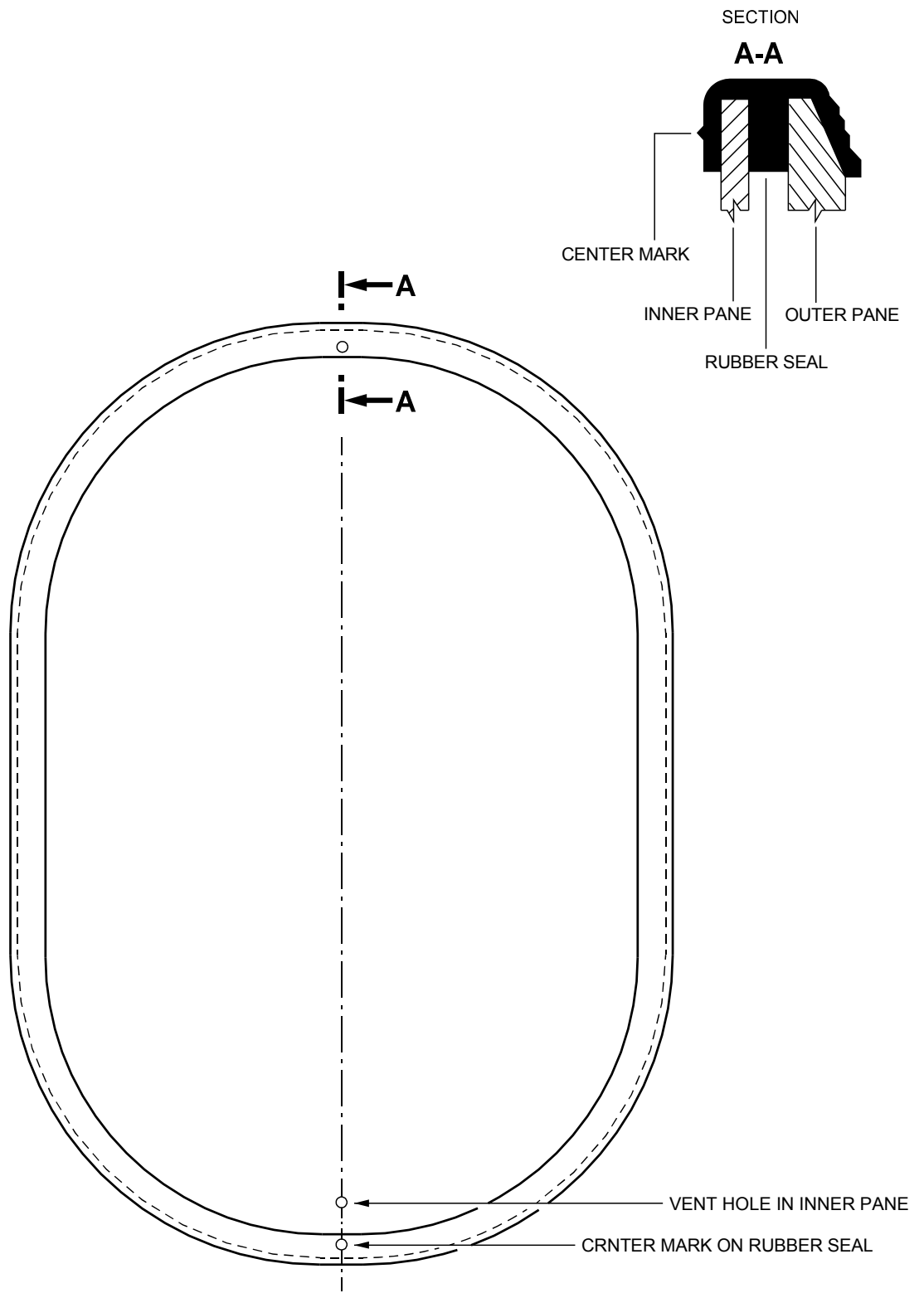
B. The rubber seal is made of synthetic rubber. It holds the outer pane and the inner pane in their positions. The rubber seal has two center marks.

3.



Graphic 1 / 56-21-13-991-001-1-A01 - Cabin Window Sheet 01

DESCRIPTION AND OPERATION



F_CM_562113_1_0010101_01_00

Graphic 1 / 56-21-13-991-001-A01 - Cabin Window
 Sheet 1 of 1